

Power Generation and Supply

With our smart motors, integrating different Ethernet interfaces, you realize the smart factory of tomorrow.

Our Value Proposition for You:

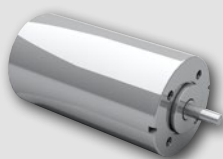
- » Smart, connectable and robust drive systems
- » High reliability
- » High protection class
- » Version for extreme temperature ranges
- » Vibration and shock-proof by default



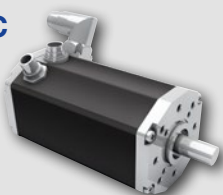
Efficiency
better than
specified for motors
of Energy Class
IE5
Super Premium

Our Highlights for Power Generation and Supply:

**Brushed DC
(GR)**



**Brushless DC
(BG)**



**Planetary
Gearboxes
(PLG)**

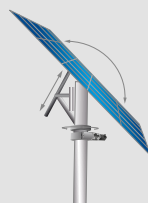


Application Examples:

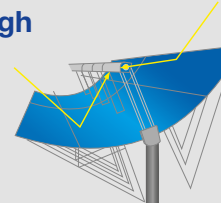
Wind Energy



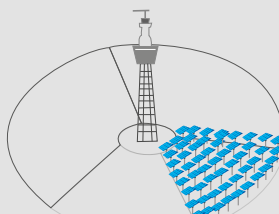
Photovoltaics



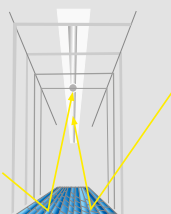
Parabolic Trough



Heliostats



**Fresnel
Reflector**



**Power
Switchgears**



Smart, Connected and Efficient Drive Technology

Dunkermotoren - Your Manufacturer for Smart, Connected and Efficient Drive Technology

» **Headquarter:**
Bonndorf in the Black Forest, four locations worldwide

» **Employees:**

1300 employees worldwide
Drive solutions up to 3900 W peak output power
One-Stop-Shop - everything from one source

Modular System

ENCODERS	BRAKES	CONTROLLERS	MOTORS	GEARBOXES
<p><i>Incremental Encoder</i> up to 4096 ppr</p> 	<p><i>Power-off Brakes</i> 0.2 - 7 Nm</p> 	<p><i>Integrated Controller</i></p> 	<p><i>Brushless DC-Servomotors</i> 6 - 3900 Watt</p> 	<p><i>Planetary Gearboxes</i> 0.3 - 160 Nm</p> 
<p><i>Magnetic Pulse Generators</i> 4 ppr</p> 	<p><i>Power-on Brakes</i> 0.2 - 3 Nm</p> 	<p><i>External Controller</i></p> 	<p><i>Permanent Magnet DC-Motors</i> 3 - 370 Watt</p> 	<p><i>Worm Gearboxes</i> 0.75 - 30 Nm</p> 
<p><i>Absolute Encoder</i> Up to 4096 ppr</p> 		<p><i>dGo/ dMove/ dPro</i></p>  <p>PROFI NET EtherCAT</p> <p>CANopen</p>	<p><i>Stepper Motors</i> 8 - 14 Nm</p> 	<p><i>Spirotec Gearboxes</i> 9 - 18 Nm</p> 
			<p><i>AC-Motors</i> 5 - 100 Watt</p> 	<p><i>Bevel Gearboxes</i> 1.6 - 120 Nm</p> 
			<p><i>Universal Motors</i> 150 - 1200 Watt</p> 	<p><i>Spindels and Cylinders</i> 450 - 2500 N</p> 
			<p><i>AC/DC Blowers</i> Thru-Flow, Bypass</p> 	
			<p><i>Linear Motors</i> 19 - 3690 N</p> 	

